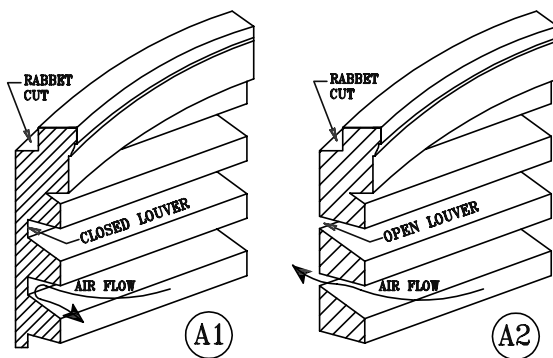
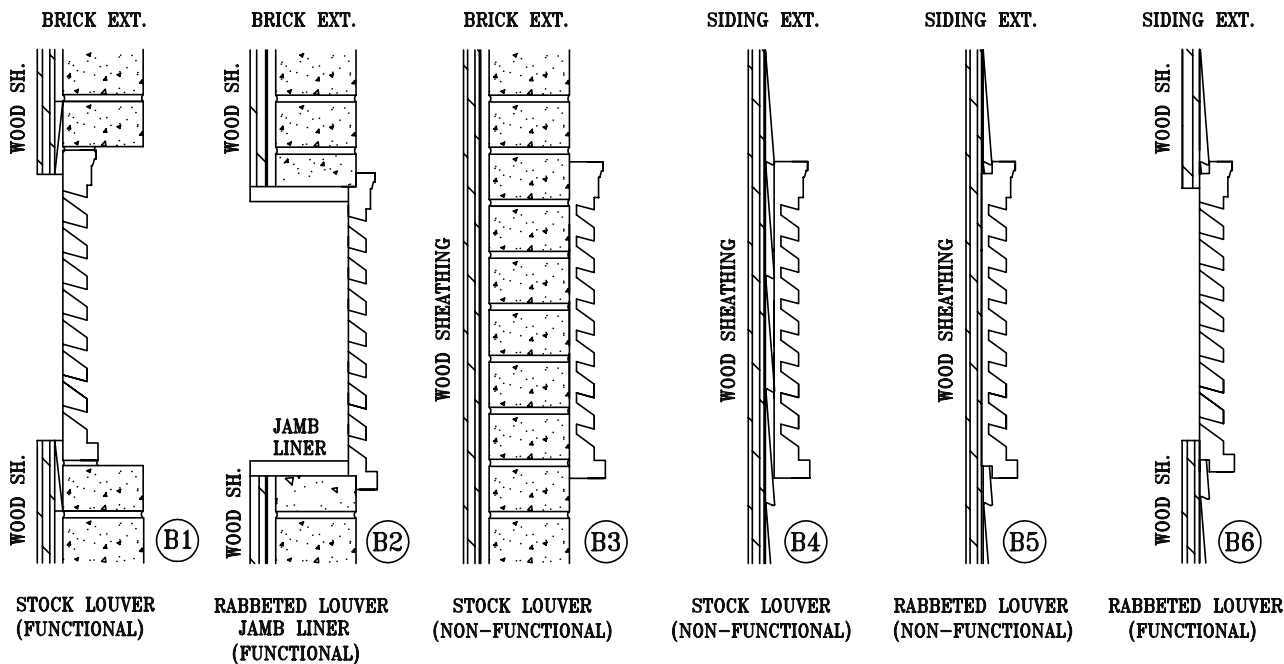


LOUVER INSTALLATION

1. First you must decide whether you want the louver to be functional (open) or non-functional (closed). See drawing A1 and A2. Apex can rabbet the louver to receive siding as shown in the drawings at right. (Call Technical Support for a quote.)



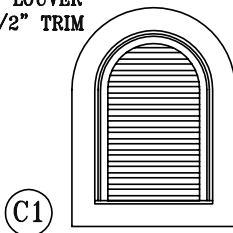
2. After deciding whether the louver is functional or non-functional you need to consider the type of surface it is being applied to; brick, siding, stucco and is it new construction or remodeling. (See drawings B1-B6 for different application examples). Apex takes no responsibility for installation procedures as each job requirement may be different from the examples shown below.



3. If louver is functional and being installed on siding, louver must be rabbeted as shown in drawing B6 to receive siding. Wood sheathing underneath siding must be cut approximately 1-1/2" smaller on all sides than louver for attachment of screws and Apex adhesive. In a siding application a J-channel must be used around the louver to seal out precipitation. In a brick application metal flashing should be used.

4. Louvers can also be ordered with either a 3-1/2" or 5-1/2" flat trim surround around outside of louver. (See example drawings C1 and C2)

CIRCLE TOP LOUVER
WITH 3-1/2" TRIM



HALF ROUND LOUVER
WITH 5-1/2" TRIM

