

CLASSIC CORAL

Collection

BY



BUILDING TOMORROW'S FUTURE BY DELIVERING EXCELLENCE TODAY.





CC-FW-1000-MO

(3"H x 1 1/2"P x 16'L) * Comes as 2 - 8' Sections



CC-FW-1017-MO

(2 3/4"H x 2"P x 16'L) * Comes as 2 - 8' Sections



CC-FW-1001-MO

(4"H x 2"P x 16'L) * Comes as 2 - 8' Sections



CC-FW-1018-MO

(3 1/2"H x 2"P x 16'L) * Comes as 2 - 8' Sections



CC-FW-1002-MO

(3"H x 1 7/8"P x 16'L) * Comes as 2 - 8' Sections



CC-FW-1019-MO

(3 3/4"H x 2"P x 16'L) * Comes as 2 - 8' Sections



CC-FW-1003-MO

(5"H x 3"P x 16'L) * Comes as 2 - 8' Sections



CC-FW-1020-MO

(5"H x 2"P x 16'L) * Comes as 2 - 8' Sections



CC-FW-1004-MO

(6"H x 3 3/8"P x 16'L) * Comes as 2 - 8' Sections



CC-FW-1021-MO

(6"H x 2"P x 16'L) * Comes as 2 - 8' Sections



CC-FW-1005-MO

(7"H x 3 1/2"P x 16'L) * Comes as 2 - 8' Sections



CC-FW-1023-MO

(11"H x 3 3/4"P x 16'L) * Comes as 2 - 8' Sections



CC-FW-1007-MO

(5"H x 1 1/4"P x 16'L) * Comes as 2 - 8' Sections



CC-FW-1024-MO

(3 1/2"H x 2 1/2"P x 16'L) * Comes as 2 - 8' Sections



CC-FW-1008-MO

(7 1/2"H x 2"P x 16'L) * Comes as 2 - 8' Sections

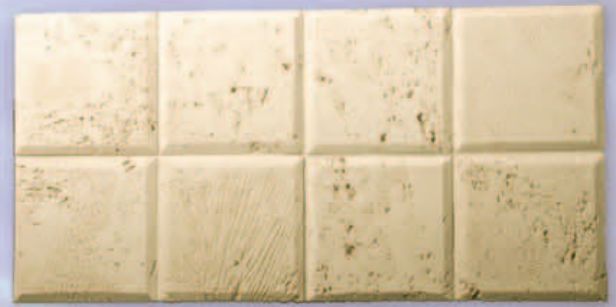


CC-FW-1025-MO

(4 1/2"H x 2 3/4"P x 16'L) * Comes as 2 - 8' Sections



CC-FW-1026-MO
(5"H x 3 1/4"P x 16'L) * Comes as 2 - 8' Sections



CC-FW-4000-PN
(24" x 48") * Sold 2 Per Case



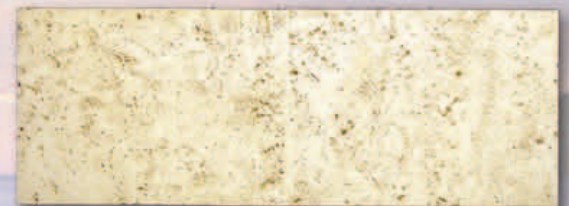
CC-FW-1027-MO
(6"H x 4"P x 16'L) * Comes as 2 - 8' Sections



CC-FW-4001-PN
(24" x 36") * Sold 4 Per Case



CC-FW-1028-MO
(8"H x 5"P x 16'L) * Comes as 2 - 8' Sections



CC-FW-4002-PN
(16" x 48") * Sold 4 Per Case



CC-FW-1029-MO
(10"H x 6"P x 16'L) * Comes as 2 - 8' Sections



CC-FW-4003-PN
(18" x 48") * Sold 4 Per Case



CC-FW-1030-MO
(12"H x 6"P x 16'L) * Comes as 2 - 8' Sections



CC-FW-4004-PN
(24" x 48") * Sold 4 Per Case

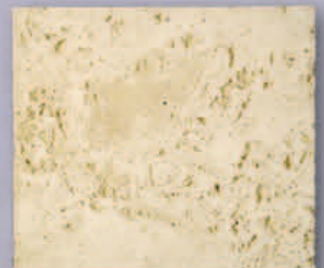


CC-FW-6000-KS
(8"L x 8"H x 3"P)

CC-FW-6001-KS
(10"L x 10"H x 3"P)

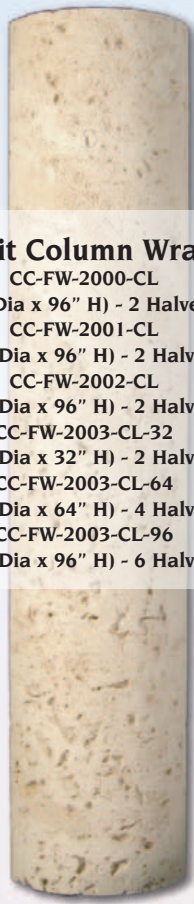
CC-FW-6002-KS
(12"L x 12"H x 3"P)

CC-FW-4005-PN
(42" x 48") * Sold 4 Per Case





CC-FW-3000-PL
(3" P x 9" W x 96" L)
* Sold in Pairs



Split Column Wrap
CC-FW-2000-CL
(8" Dia x 96" H) - 2 Halves
CC-FW-2001-CL
(10" Dia x 96" H) - 2 Halves
CC-FW-2002-CL
(12" Dia x 96" H) - 2 Halves
CC-FW-2003-CL-32
(18" Dia x 32" H) - 2 Halves
CC-FW-2003-CL-64
(18" Dia x 64" H) - 4 Halves
CC-FW-2003-CL-96
(18" Dia x 96" H) - 6 Halves



Fluted Pilaster
CC-FW-3001-PL
(2 3/4" P x 8" W x 96" L)

* Sold in Pairs



Plinth
CC-FW-3005-PB
(10" W x 12" H x 3 3/4" P)
* Sold in Pairs



CC-FW-5003-BK
(13" W x 16" H x 7" P)



Temple of the Winds Capital
CC-FW-2014-CC (15 1/2" x 15 1/2" x 10 1/2")
Use with 8" Column Wrap
CC-FW-2015-CC (17 1/4" x 17 1/4" x 11 1/2")
Use with 10" Column Wrap
CC-FW-2016-CC (19" x 19" x 13 1/2")
Use with 12" Column Wrap



CC-FW-5000-BK
(4" W x 9" H x 6" P)
* Sold in Pairs



CC-FW-5002-CB
(6 1/2" W x 15" H x 8" P)
* Sold in Pairs



CC-FW-5001-CB
(6" W x 14" H x 7" P)



Roman Ionic Capital
CC-FW-2012-CC (11 1/2" x 14" x 6")
Use with 8" Column Wrap
CC-FW-2013-CC (14" x 17" x 8")
Use with 10" Column Wrap



Column Bases
CC-FW-2004-CC (11 1/2" x 11 1/2" x 5")
Use with 8" Column Wrap
CC-FW-2005-CC (13 1/2" x 13 1/2" x 5 1/2")
Use with 10" Column Wrap
CC-FW-2006-CC (16 1/2" x 16 1/2" x 7")
Use with 12" Column Wrap
CC-FW-2018-CC (23" x 23" x 9")
Use with 18" Column Wrap



Tuscan Column Capitals
CC-FW-2008-CC (11 1/2" x 11 1/2" x 4 1/2")
Use with 8" Column Wrap
CC-FW-2009-CC (13 1/2" x 13 1/2" x 5")
Use with 10" Column Wrap
CC-FW-2010-CC (16" x 16" x 6")
Use with 12" Column Wrap
CC-FW-2019-CC (23" x 23" x 9")
Use with 18" Column Wrap



CLASSIC CORAL
Collection

Inspired by the "Desert Oasis of the Ocean", Apex Urethane Millwork offers the most distinctive and breathtaking selection of "Coral" replications in millwork. Replicating the richest and most diverse ecosystems on Earth; the "life like" panels, crown mouldings, brackets, etc., articulate the delicate skeletal coral membranes seen in Brain Coral, Wire Coral, Table Coral, and Antler Coral; with the highest detail seen other than the original coral being replicated.

DISTRIBUTED BY:



105 Church Lane
Red Lion, PA 17356
Phone: 717-246-1948
Fax: 717-244-8187
www.aumill.com